



**MEADOW VIEW, Epping Lane, Stapleford Tawney,**  
**Asking Price £1,360,000**

**MILLERS**  
NEW HOMES



**\*\* STAMP DUTY INCLUDED \*\*** **\*\* READY FOR OCCUPATION \*\***  
**\*\* EXCLUSIVE DATED DEVELOPMENT OF JUST FOUR DETACHED PROPERTIES**  
**\*\* OPEN COUNTRYSIDE VIEWS - LARGE CORNER PLOT WITH OPEN ASPECT \*\***

Plot Four at Meadow View presents a rare opportunity to secure an exceptional new home in one of the Epping Forest district's most desirable countryside settings.

This exclusive gated development of just four executive homes combines peaceful rural surroundings with convenient access to Epping, Theydon Bois, and excellent commuter links into London.

Extending to approximately 2,099 sq ft, Plot Four is a beautifully appointed detached four-bedroom residence, thoughtfully designed for modern family living. A stunning bespoke Stoneham kitchen and dining space forms the heart of the home, complemented by a bright dual-aspect sitting room opening onto the gardens, a separate study, and utility room. Upstairs, four spacious bedrooms include luxurious en-suite facilities to the principal and second bedrooms, alongside a stylish family bathroom.

Occupying a desirable corner plot, the property benefits from secluded rear and side gardens, a private driveway, and additional frontage with potential for an open-cart style garage or car barn, subject to planning permission.

With immediate availability, stamp duty included, and beautifully finished accommodation throughout, early viewing is highly recommended to fully appreciate the quality, setting, and lifestyle on offer.

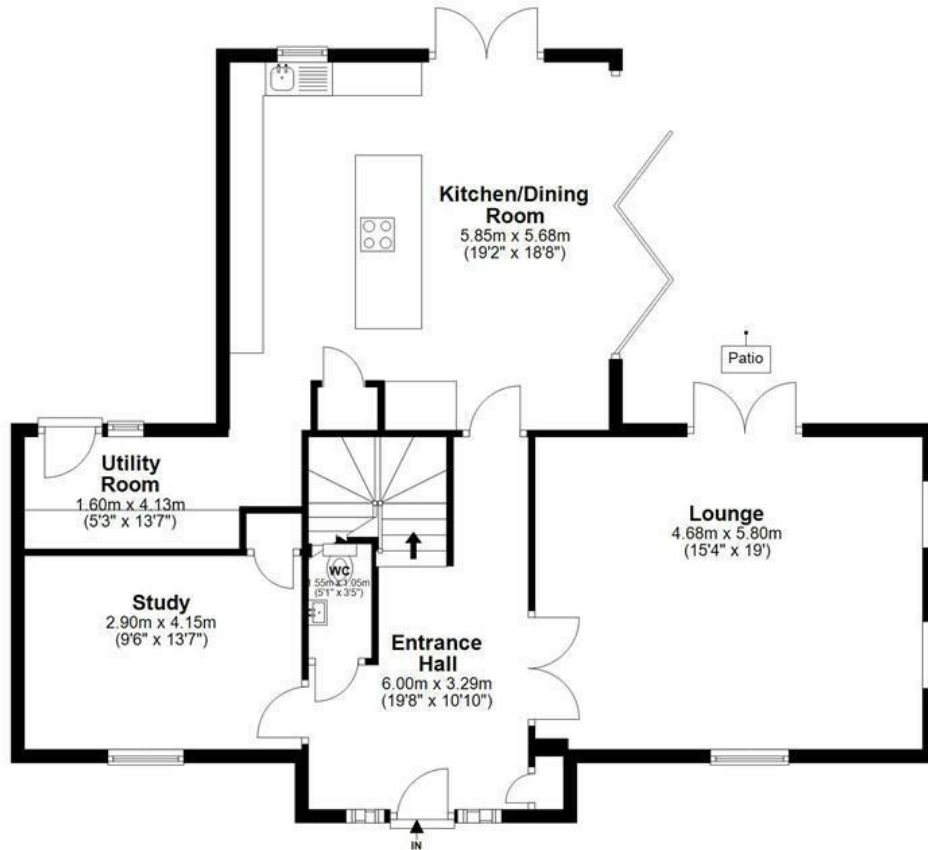
**MILLERS**  

---

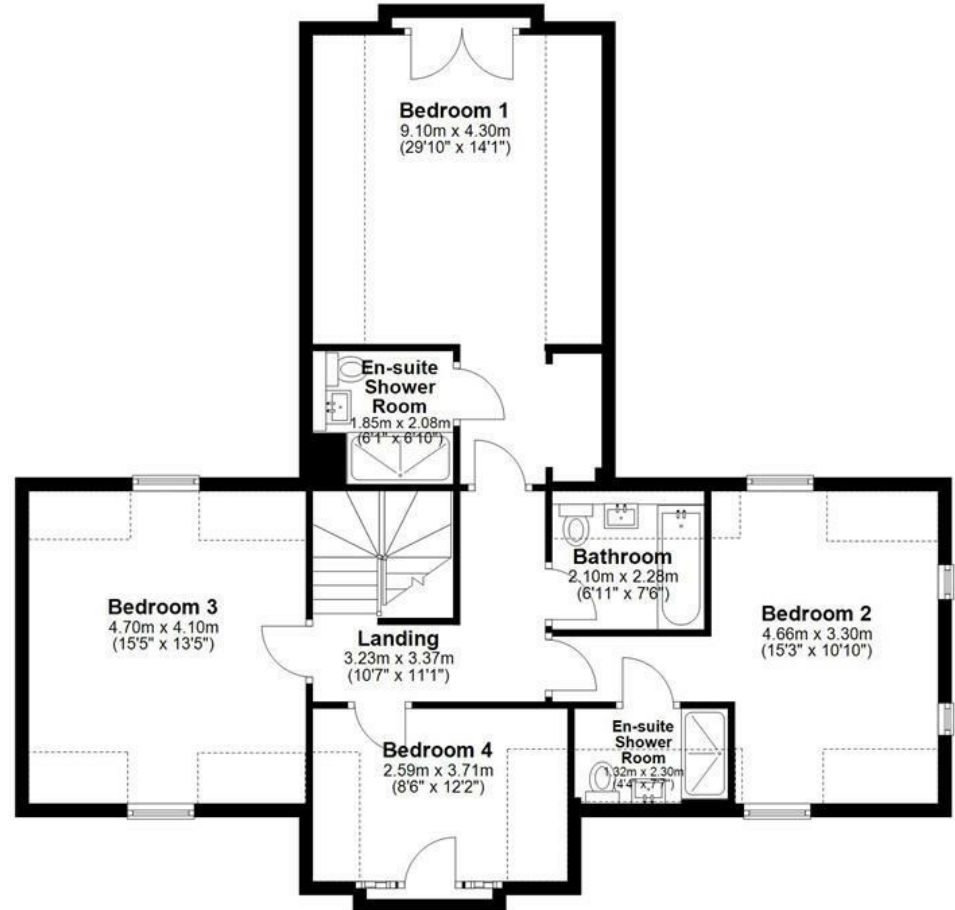
**NEW HOMES**

**Meadow Views  
Stapleford Tawney**  
Plot 4

**Ground Floor**



**First Floor**

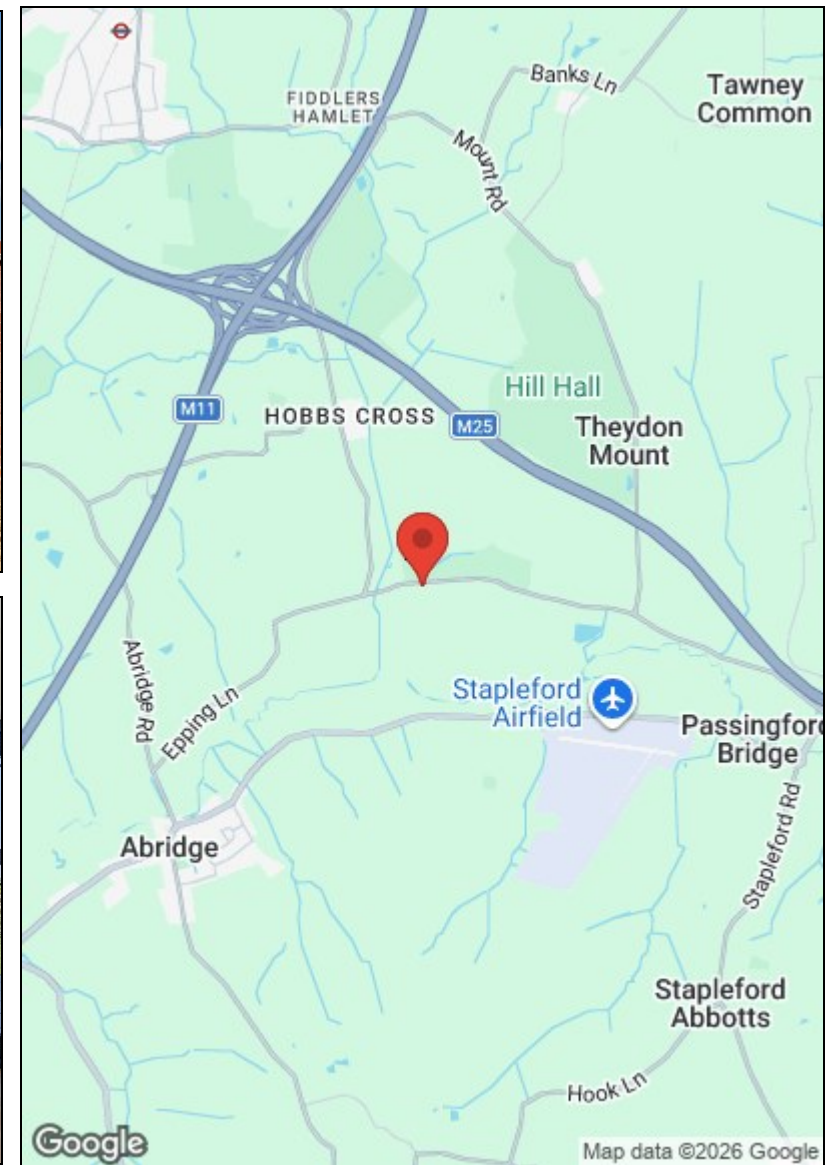


Total area : approx. 195 sq metres (2099 sq feet)

Our floor plans are intended to give a general indication of the proposed floor layout only and may vary in the finished building and overall footage

## Directions

From Miller's office at 229 High Street, Epping CM16 4BP continue north along the High Street turning right into Stonards Hill, just past Theydon Grove development and opposite the EFDC Council offices, proceed to the T junction and turn left heading towards Theydon Mount and passing Hill Hall on your right continue to the T junction turn right into Epping Lane and continue until you reach the Meadow Views development on your left-hand side.



**Viewing** Please contact our Millers Office on 01992 560555 if you wish to arrange a viewing appointment for this property or require further information.

These particulars, whilst believed to be accurate are set out as a general outline only for guidance and do not constitute any part of an offer or contract. Intending purchasers should not rely on them as statements of representation of fact, but must satisfy themselves by inspection or otherwise as to their accuracy. No person in this firm's employment has the authority to make or give any representation or warranty in respect of the property.

229 High Street, Epping, Essex, CM16 4BP

Tel: 01992 560555 | Email: [sales@millersepping.co.uk](mailto:sales@millersepping.co.uk)

[www.millers-portfoliohomes.co.uk](http://www.millers-portfoliohomes.co.uk)